

Node Manager, Tracking and Feedback: Progress update and future roadmap



ESGF F2F Conference
Washington, DC, December 2016



Team lead: Sasha Ames
Prashanth, Luca, Katharina, Nicolas

Progress and Accomplishments for 2016: Node Manager

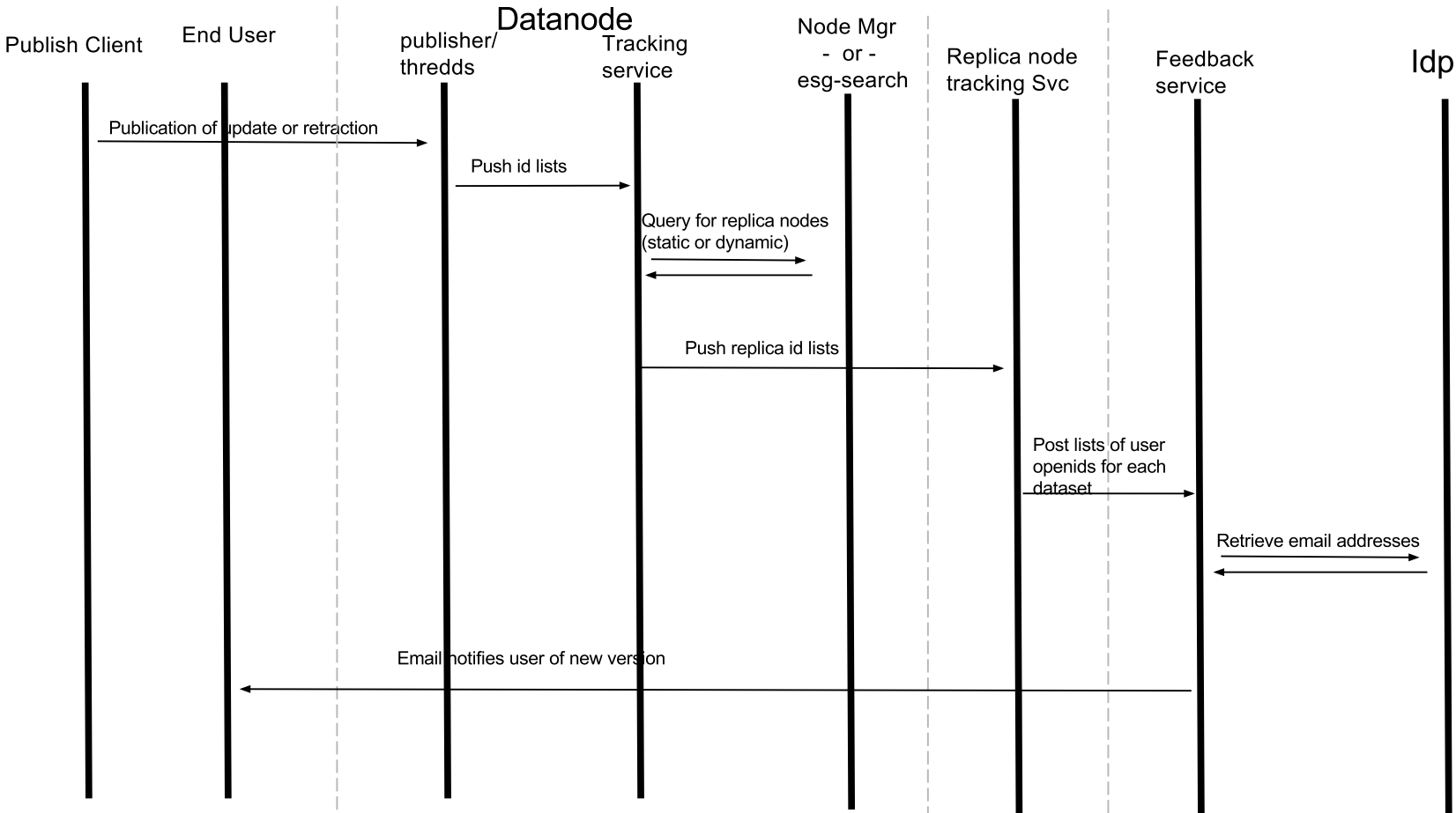
- **Node Manager:** “Core” ESGF module that maintains node status, federated metadata, properties, metrics and registry of services
- Django module integrated into apache for node-based deployment
 - Worker/monitoring daemon process running via control scripts
 - Task queue of requests through file system
- Testing performed with up to 7 nodes in cluster environment; five test-federation nodes
- Dashboard integration tests with served registration.xml
- Refactor and module conversion to SSL tested in virtual environment
- Code merged into github: <https://github.com/ESGF/esgf-node-manager>

Tracking and Feedback: scope and status

- Provide ESGF data users with notification emails when certain “changes” occur based on previously downloaded content
 - Publication of updated dataset version
 - Retraction of dataset
- Status: architecture documented

Tracking and Feedback architecture

Replica Node Tracking and Feedback Workflow



Missed milestones

- Node Manager: production deployment
- Tracking and Feedback: prototype implementation

2017 Roadmap

- Node Manager
 - Convert control scripts to esg-node
 - Integrate setup into installer
 - Federation production deployment
 - Implement secret key deployment based on signed certificates so we can identify “trusted” nodes
 - Determine if esgf_*.xml (non-static) files should be managed automatically as done by previous Java esgf_node_manager
- Tracking/Feedback
 - Begin services implementation
 - Integrate publisher notifications to tracking service
 - Feedback service: first version read user email address direct from PGSQL db
 - Query email address from IdP API

Working teams collaborations

- Node Manager
 - IWT – integrate setup into installer
 - CWT – resource availability
 - Stats – determine more metrics
 - Others – use of Node Manager for node status monitoring, sharing of metadata, etc.
 - Eg. make an IdP “not selectable” if determined to be down
- Tracking/Feedback
 - IdEA – query IdP for user emails
 - PWT, Errata – integration of tracking
 - CoG, search – Saved search UI

Additional Resources Needed

- Full/part time developer(s) would help out a lot